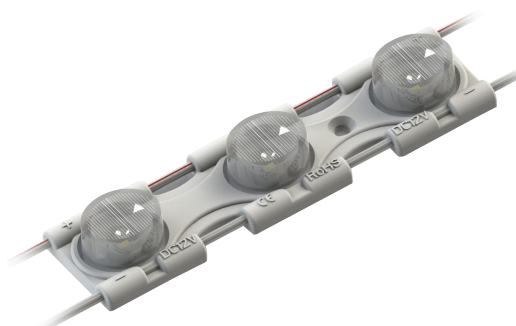




Sign Lighting World  
720-242-900  
Sales@signLightingWorld.com  
www.SignLightingWorld.com



**S-3280-CW65**



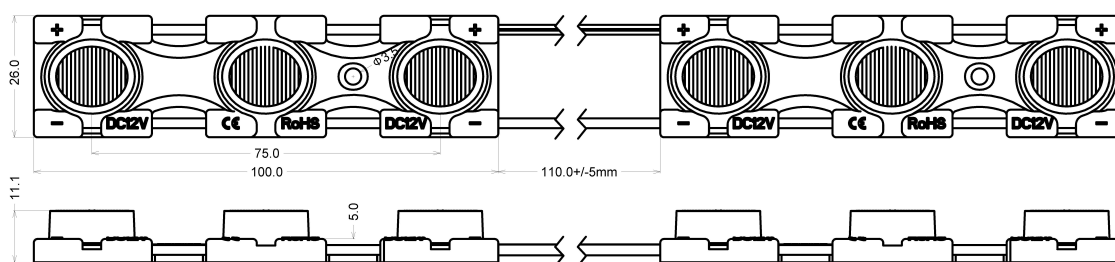
## ◆ Features

- ✧ Constant Current Technology, 20pcs per series
- ✧ Special elliptical lens
- ✧ Injection molding process, Waterproof: IP 67
- ✧ EMC LED, High brightness and reliability
- ✧ Energy saving, Environment friendly
- ✧ Long life span
- ✧ Suitable for 2.3"-4.7" thickness double side light boxes.

## ◆ Applications

- ✧ Commercial standing lighting
- ✧ Light box lighting

## ◆ Dimensions

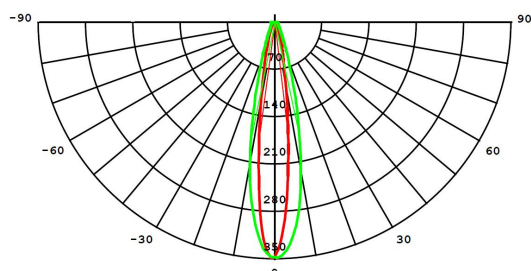


Note: The pitch is variable.

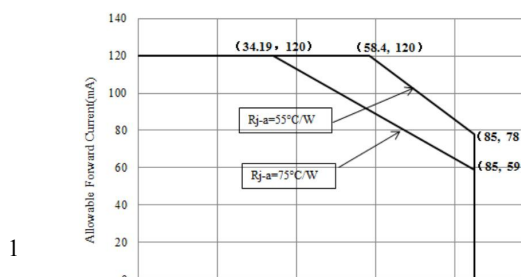
## ◆ Technical parameters

Part no.	Color	Wave Length or CCT	Operating Voltage	Rated Power per module	Beam Angle	Lm Flux per module	IP Rank
S-3280-CW65	Pure white	6000-7500K	DC12V	2.8W	13×25°	240lm	IP67

## ◆ Distribution curve



## ◆ Maximum current vs Junction temperature





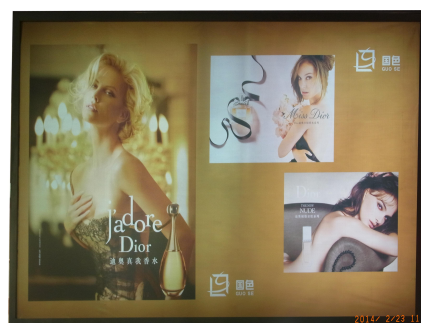
#### ◆ Illuminance and distance table

Box size (cm)	Illuminance (lux)	Distance between Modules centers(mm)	Distance Between rows (mm)	Qty/m <sup>2</sup> (pcs/m <sup>2</sup> )	Power Per m <sup>2</sup> (W/m <sup>2</sup> )
200×100×6	560~950	120	——	15	42
200×150×10	460~950	120	——	15	42

#### Notes:

1. The tests are based on flex banner (transmittance>30%) , the data for reference only;
2. Arrangement of the above remarks shown around, light box and bottom are white.

#### ◆ Application Guide



#### ◆ Attentions

1. Maximum number of modules per chain is 20pcs from power supplier to single end.
2. The parameters may change as the type of material of lighting boxes or channel letters.
3. The LED module including its components can't be mechanical stressed.
4. Please ensure that the power supply is adequate power to operate the total load.
5. Only professionals can tear down, install or maintain LED modules.

6. All of box materials used for installation have to meet anti-flame rules and related so on.
7. Power supply should be short circuit and overloading protection, and total power should be less than rated power 80% of that power.
8. Operating Temperature: -25~55°C.